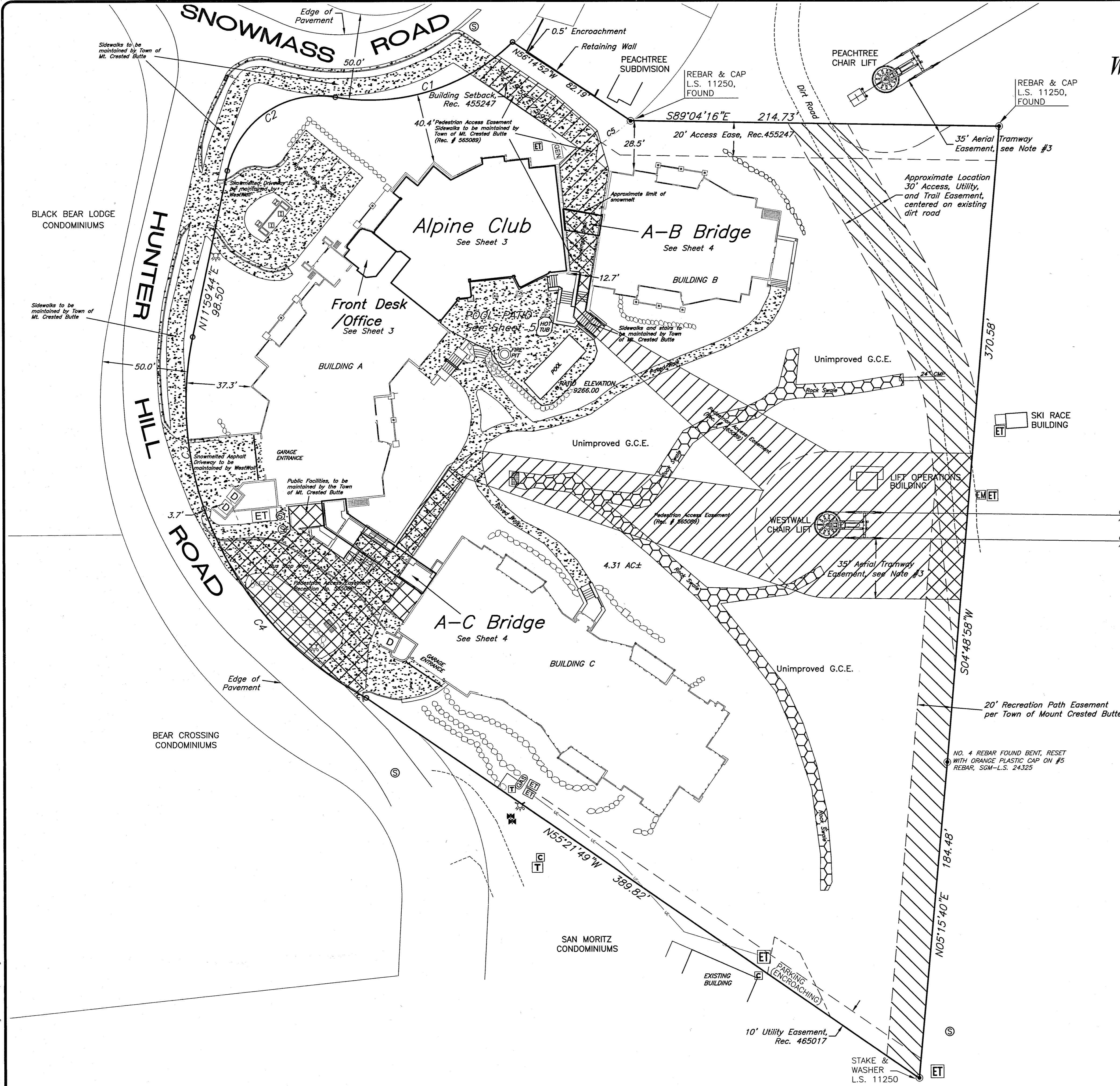




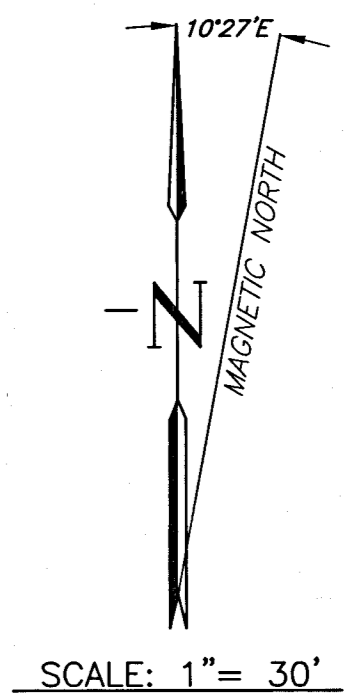
# SITE PLAN WESTWALL LODGE AT MT. CRESTED BUTTE SECOND SUPPLEMENTAL



- NOTES:**
- 1) Utility Easement Agreement, recorded at Reception No. 465017 of the records of Gunnison County, describes a 15' wide easement that may be located wherever the electric utility line is located. Please contact Gunnison County Electric Association for further information and location of this utility line.
  - 2) Refer to Easement Agreement as recorded at Reception No. 565089, between WestWall Partners, LLC and the Town of Mt. Crested Butte, for the extent and conditions of the Pedestrian Access Easement and the Snowmelted areas as depicted hereon.
  - 3) 35' Aerial Tramway Easement is according to Article 2.1.1.2.2.1 of the Rules and Regulation of the Colorado Passenger Tramway Safety Board.
  - 4) The former legal description of this property is T-Bar Tract, Town of Mount Crested Butte, County of Gunnison, State of Colorado, according to the plat recorded at Reception No. 455247 of the records of Gunnison County, Colorado.

CURVE TABLE						
CURVE	LENGTH	RADIUS	TANGENT	CHORD DIST.	BEARING	DELTA
C1	111.66	118.00	60.41	107.54	N72°47'55"E	54°13'02"
C2	84.04	54.77	52.81	76.03	S55°56'02"W	87°54'47"
C3	98.68	185.00	50.54	97.51	S03°17'08"E	30°33'43"
C4	150.68	200.00	79.12	147.14	S40°08'59"E	43°09'58"
C5	39.67	210.00	19.90	39.61	N54°21'05"E	10°49'28"

- LEGEND**
- FOUND PROPERTY CORNER MONUMENT, AS NOTED
  - FOUND REBAR AND ORANGE PLASTIC CAP, L.S. 24325
  - ⊕ ELECTRIC TRANSFORMER
  - ⊖ ELECTRIC METER
  - ⊙ TELEPHONE PEDESTAL
  - ⊙ CABLE TELEVISION PEDESTAL
  - ⊙ FIRE HYDRANT
  - ⊙ WATER VALVE
  - ⊙ SEWER MANHOLE
  - ⊙ DUMPSTER
  - ⊙ SIGN
  - ⊙ VENTILATION GRATE
  - ⊙ RETAINING WALL
  - ⊙ POURED CONCRETE
  - ⊙ PROPANE TANK
  - ⊙ IRRIGATION CONTROL BOX
  - ⊙ DRAIN GRATE



**Notice:**  
According to Colorado Law, you must commence any legal action based upon any defect in this survey within three years after you first discover such defect. In no event may any legal action based upon any defect in this survey be commenced more than ten years from the date of the certification shown hereon.

**SCHMUESER GORDON MEYER**  
ENGINEERS SURVEYORS

118 W. 6TH STREET, SUITE 200  
GLENWOOD SPRINGS, COLORADO 81601  
(970) 945-1004 FAX (970) 945-5948  
ASPEN, COLORADO (970) 925-6727  
CRESTED BUTTE, CO (970) 349-5355

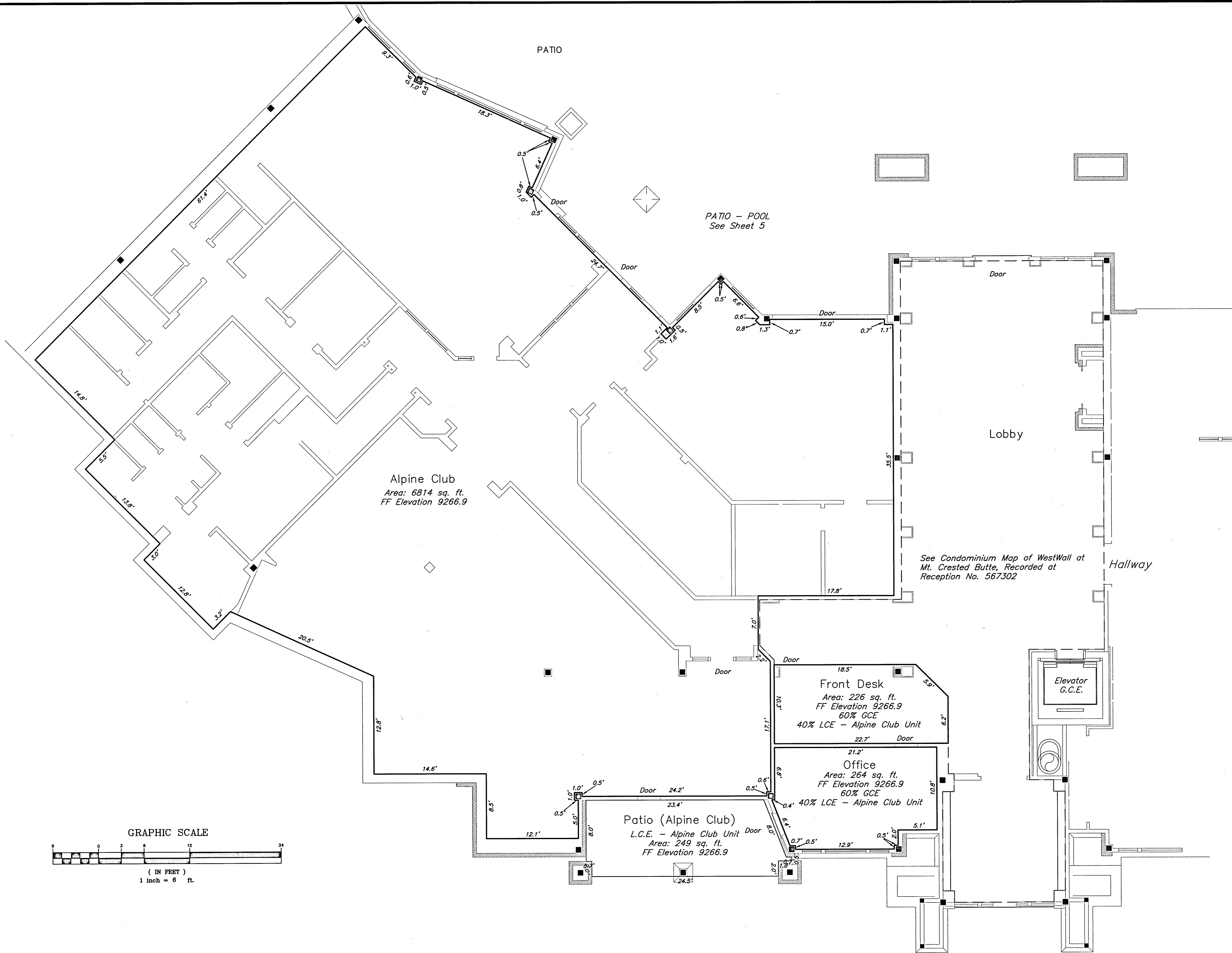
## WestWall Lodge Second Supplemental

NUM-BER	REVISION	DATE	BY

**Site Map**

Job No.	2006-202.001	<b>2</b> OF <b>5</b>
Drawn by:	kn	
Date:	7-19-06	
Approved:		
File:	First Amended EX.dwg	

G:\2006\202.001\Map\Second Amended EX.dwg Sheet: Plt, 10 Aug 2007, 8:12am Printed: Wed, 17 Oct 2007, 9:41am Innuoback

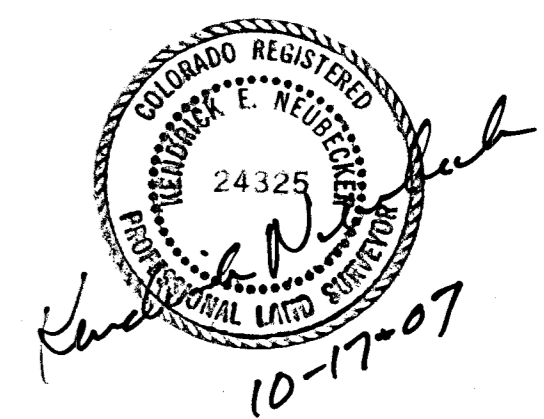
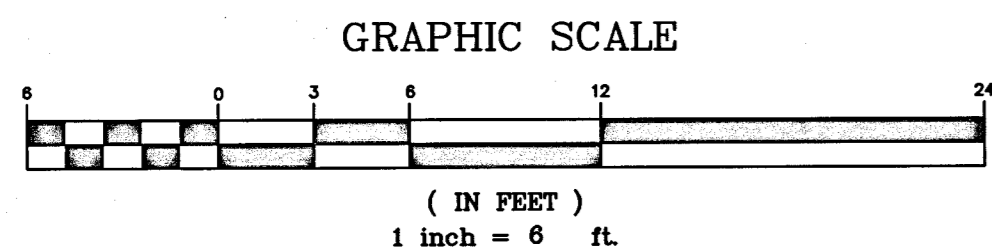


See Condominium Map of WestWall at Mt. Crested Butte, Recorded at Reception No. 565090 for exterior dimensions and unit cross section elevations of Building A.

**LEGEND**

- G.C.E. General Common Element
- L.C.E. Limited Common Element
- C.H. Ceiling Height
- Structural Column
- ▬ Window (Typical)

See Condominium Map of WestWall at Mt. Crested Butte, Recorded at Reception No. 567302



0:\1\2006\1022\0221.dwg Alpine Club.dwg Saved: Fri, 10 Aug 2007 8:17am Plotted: Wed, 17 Oct 2007 9:42am kennebeker

**Notice:**  
According to Colorado Law, you must commence any legal action based upon any defect in this survey within three years after you first discover such defect. In no event may any legal action based upon any defect in this survey be commenced more than ten years from the date of the certification shown hereon.

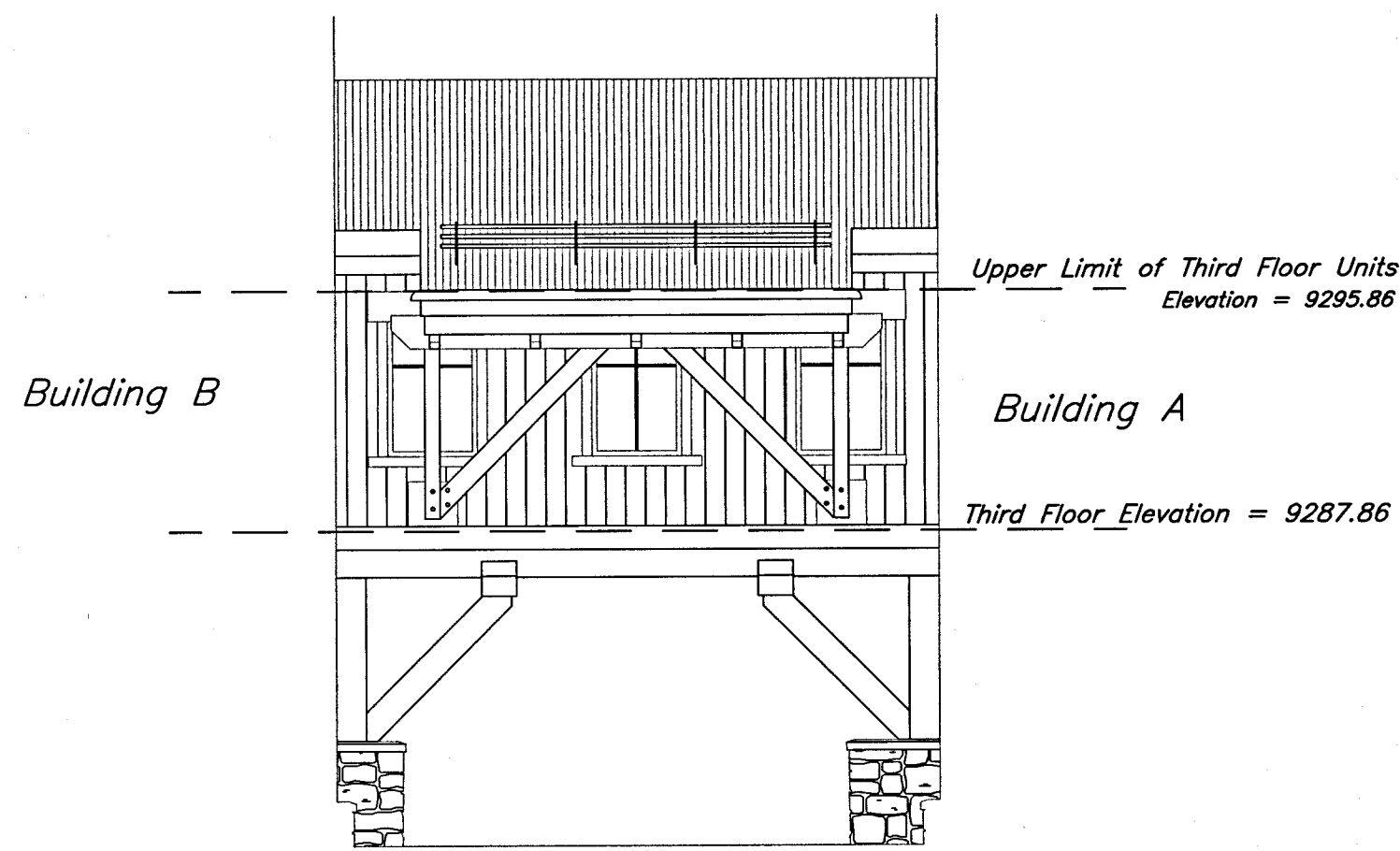
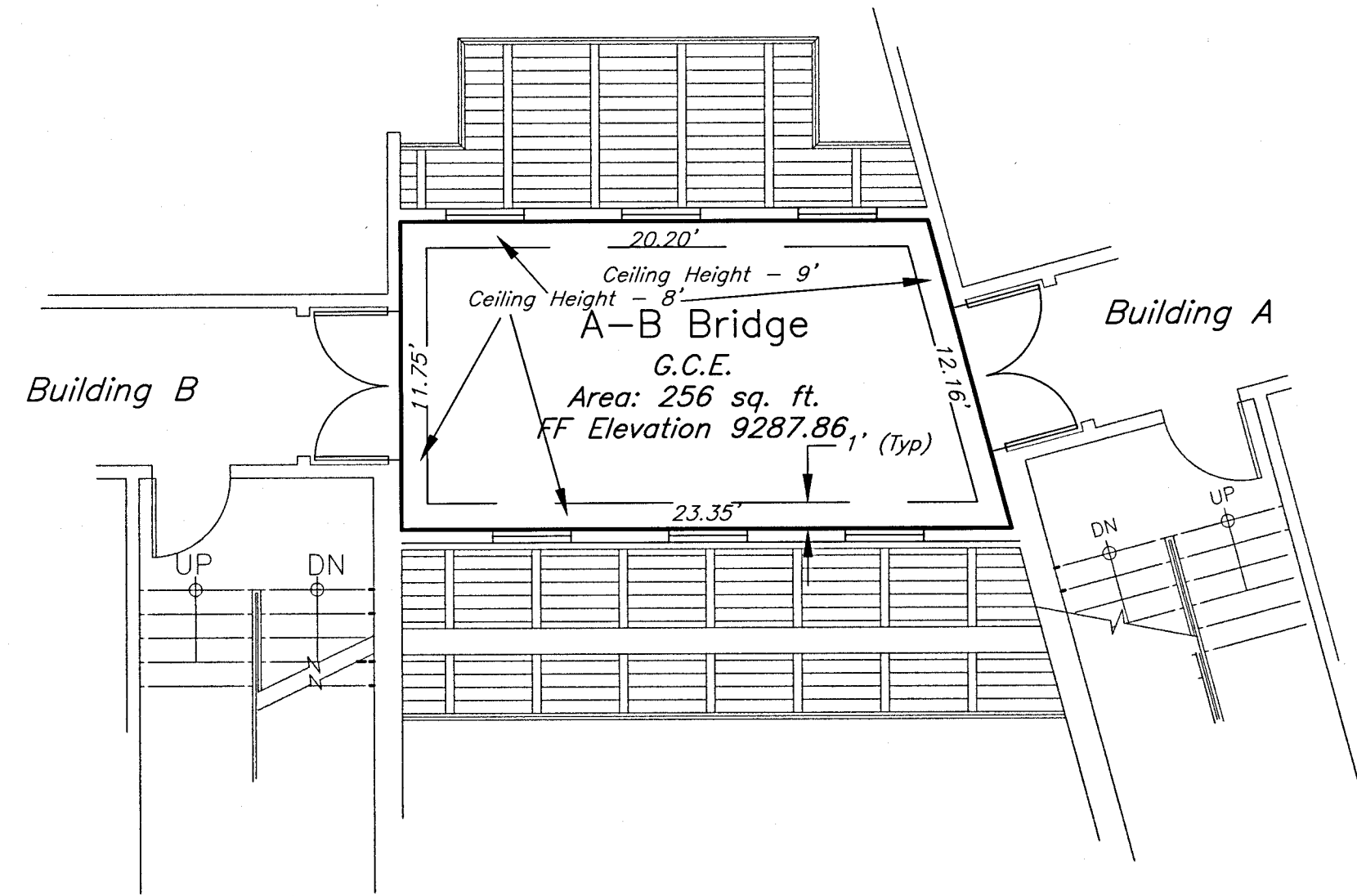
**SCHMUESER GORDON MEYER**  
 118 W. 6TH STREET, SUITE 200  
 GLENWOOD SPRINGS, COLORADO 81601  
 (970) 945-1004 FAX (970) 945-5948  
 ASPEN, COLORADO (970) 925-6727  
 CRESTED BUTTE, CO (970) 349-5355

**WestWall Lodge**  
**Second Supplemental**

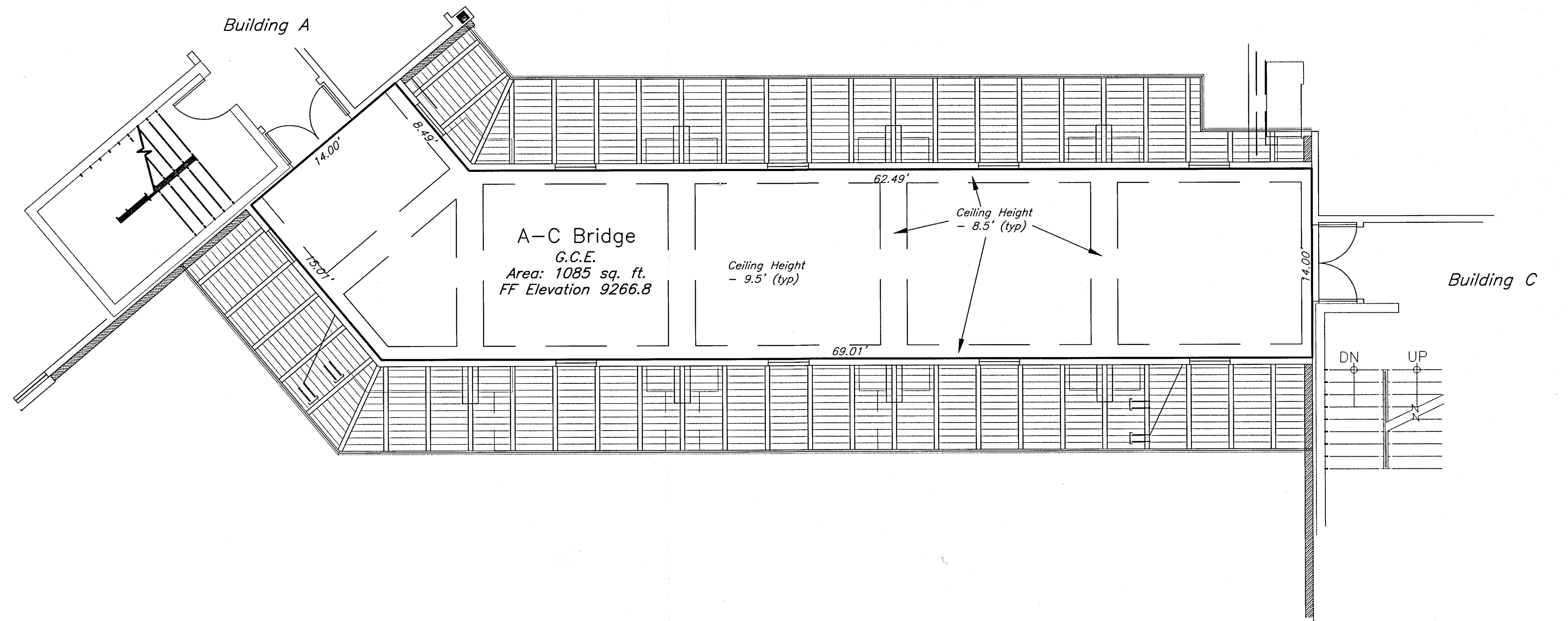
NUM-BER	REVISION	DATE	BY

**Alpine Club Building A**

Job No. 2006-202.002  
 Drawn by: KN  
 Date: 8-10-07  
 Approved:  
 File: Alpine Club.dwg

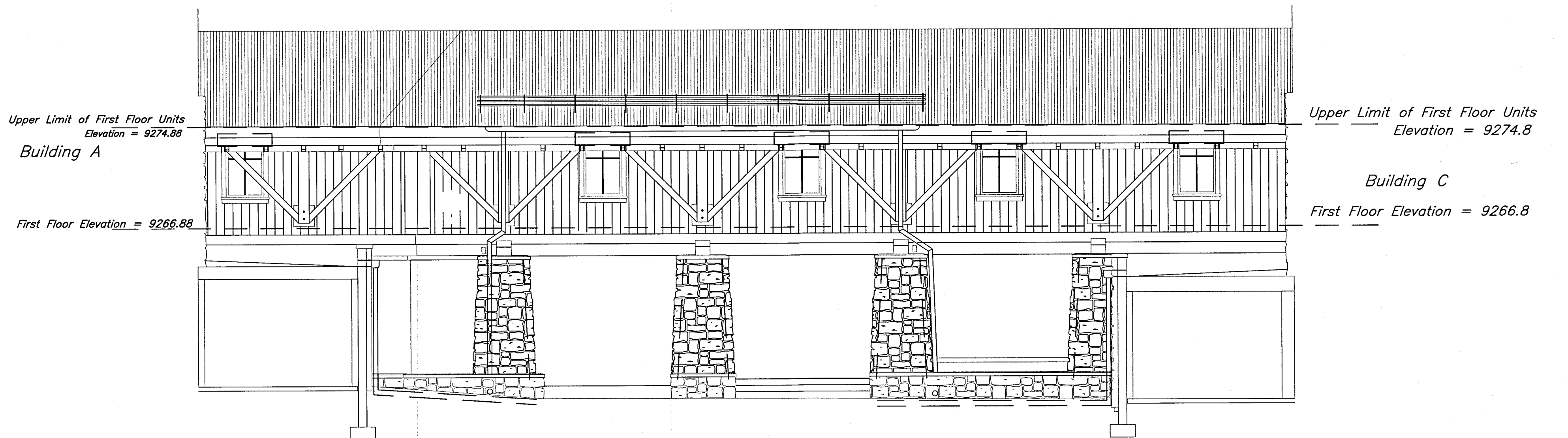


A-B Bridge Section  
SCALE: 1" = 6'



Windows

Doors



A-C Bridge Section  
SCALE: 1" = 6'

Colorado Registered Professional Engineer  
24325  
K. N. [Signature]  
10-17-07

G:\2006\202\02\eng\Bridg sheet.dwg Saved: Thu, 02 Aug 2007 8:50am Plotfile: Wed, 17 Oct 2007 9:48am knaubecker

**Notice:**  
According to Colorado Law, you must commence any legal action based upon any defect in this survey within three years after you first discover such defect. In no event may any legal action based upon any defect in this survey be commenced more than ten years from the date of the certification shown hereon.

SCHMUESER | GORDON | MEYER  
ENGINEERS | SURVEYORS

SCHMUESER GORDON MEYER  
118 W. 6TH STREET, SUITE 200  
GLENWOOD SPRINGS, COLORADO 81601  
(970) 945-1004 FAX (970) 945-5948  
ASPEN, COLORADO (970) 925-6727  
CRESTED BUTTE, CO (970) 349-5355

WestWall Lodge  
Second Supplemental

NUM-BER	REVISION	DATE	BY

Bridges

Job No.	2006-202.002
Drawn by:	KN
Date:	7-19-07
Approved:	[Signature]
File:	Bridge sheet.dwg

4  
OF  
5

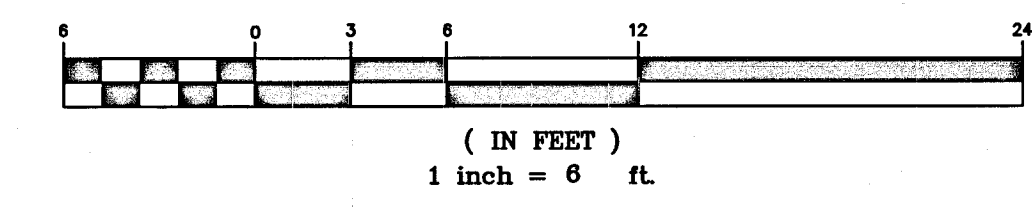
Copyright 2008, SSM, Inc.

Alpine Club

See Sheet 3

NORTH

GRAPHIC SCALE



LEGEND

- G.C.E. General Common Element
- L.C.E. Limited Common Element
- C.H. Ceiling Height
- Structural Column
- ▬ Window (Typical)

BUILDING A

BUILDING B

Pool - Patio (Alpine Club)

L.C.E. - Alpine Club Unit  
Area: 4645 sq. ft.  
FF Elevation 9266.00

HOT TUB

FIRE PIT

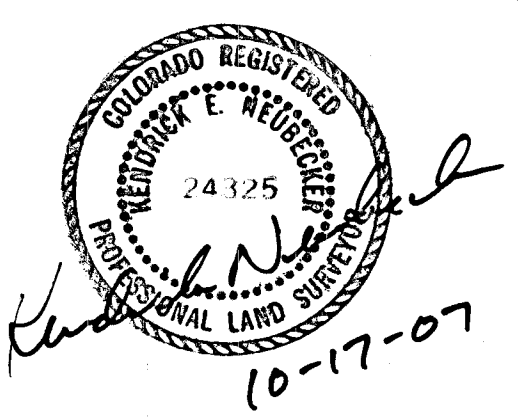
POOL

PATIO ELEVATION  
9266.00

Sidewalks and stairs to be maintained by Town of Mt. Crested Butte

Pedestrian Access Easement  
(Rec. # 565789)

Unimproved G.C.E.



01-12-2006 10:22:02Z [img] Pool-Patio L.C.E.dwg Sheet: Plt, 10 Aug 2007, 8:19am PlotSize: Med, 17 Oct 2007, 9:55am In:msubster

**Notice:**  
According to Colorado Law, you must commence any legal action based upon any defect in this survey within three years after you first discover such defect. In no event may any legal action based upon any defect in this survey be commenced more than ten years from the date of the certification shown hereon.

**SCHMUESER GORDON MEYER**  
118 W. 6TH STREET, SUITE 200  
GLENWOOD SPRINGS, COLORADO 81601  
(970) 945-1004 FAX (970) 945-5948  
ASPEN, COLORADO (970) 925-6727  
CRESTED BUTTE, CO (970) 349-5355

**WestWall Lodge**  
**Second Supplemental**

NUM-BER	REVISION	DATE	BY

**Pool - Patio**  
**Alpine Club L.C.E.**

Job No. 2006-202.001	5
Drawn by: kn	
Date: 7-19-06	
Approved:	OF 5
File: First Amended EX.dwg	